

GREATER MANCHESTER COUNTY RECORD OFFICE
CATALOGUE OF ARCHIVES

B/10 Manchester Ship Canal Company
Catalogue of Minute Books, Financial Records and
Shareholders Address Books

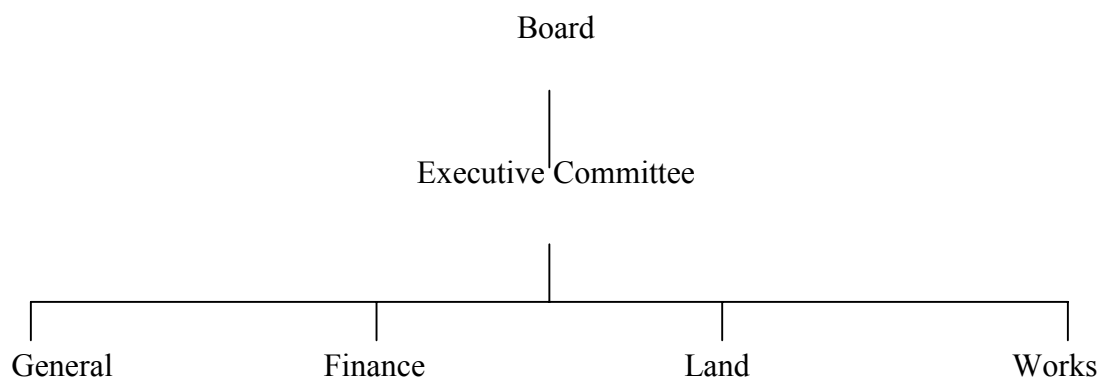


Greater Manchester County Record Office

Signed Minutes of the following Committees

1.	Minutes prior to 1885 Act.	1882-1887
2.	Shareholders Minutes	1896-1914
3.	Board Minutes	1885-1944
4.	Executive Committee	1882-1909
5.	Works Committee	1887-1940
6.	Traffic and Rates Committee	1891-1900
7.	Land and Estate Committee	1893-1934
8.	Labour Executive	1916-1936
9.	Pilotage Committee	1895-1945
10.	Attendance books of Pilotage Committee	1895-1955
11.	Tolls Rates and Charges Committee	1904-1937
12.	Finance Committee	1934-1943
13.	Stores Committee	1939-1943
14.	Bridgewater Committee	1930-1938
15.	Sub-Committee Minutes	1904-1934
16.	Agendas of General Meetings	1893-1929

Proposed Committee structure February 1887



NB Consultative Committee mentioned but it is not in the structure as proposed in Feb 1887

Greater Manchester County Record Office

From 18 Dec 1891

Responsibility of Executive Committee changed. Traffic Land & Parliamentary Committee taking over the functions of the Executive. The latter now consisting of four Directors appointed by Manchester Corporation and three appointed by the shareholders Executive to carry out works order materials to complete the council. (Inc copies of contracts).

The Executive Committee became the Works committee in 1909. Or rather the Works Committee took over the functions of the Executive Committee. In Dec 1891 the Works Committee was discontinued together with the Special Committee.

See individual Committees for brief histories.

Not all the Minutes Books have been deposited with the Record Office. Some have been retained by the Company.

B10/1/1-3 Minutes prior to 1885 Act

Prior to the enabling act of 1885 the Company had a series of Committees meeting on a regular basis. The following volumes containing Minutes of the Provisional Committee. However there are other Committees represented, namely the Executive and Parliamentary Committees.

1. Nov 1882 - Aug 1883
2. Jan 1884 - May 1885
3. May 1885 - Aug 1887

B10/1/2/1 Shareholders Minutes

1. Feb 1886 - Aug 1914

B10/1/3/1-21 Board Minutes

- 1 Aug 1885 - 11 Mar 1887
- 2 18 Mar 1887 - Oct 1888
- 3 Nov 1888 - 22 Aug 1890
- 4 29 Aug 1890 - 1 Mar 1892
- 5 Mar 1892 - Dec 1893
- 6 Jan 1894 - 6 Dec 1895
- 7 20 Dec 1895 - 13 Jan 1899
- 8 27 Jan 1899 - Dec 1901
- 9 Jan 1902 - 2 Sep 1904
- 10 9 Sep 1902 - Jul 1907
- 11 Aug 1907 - 9 Dec 1910
- 12 23 Dec 1910 - 27 May 1913
- 13 30 May 1913 - 5 Nov 1915

Greater Manchester County Record Office

14. 11 Nov 1915 - 11 Jun 1918
15. 28 Jun 1918 - Feb 1922
16. Mar 1922 - 11 May 1925
17. 29 May 1925 - Oct 1928
18. Nov 1928 - Jul 1931
19. Aug 1931 - May 1934
20. Jan 1934 - Dec 1938
21. Jan 1939 - May 1944

B10/1/4//1-20 Executive Committee Minutes

This Committee met between 1882-83 only to be disbanded. It was re-appointed by Resolution of the Board ~10 Feb 1887. Dissolved and re-appointed by the Board 16 Sep 1887. Became Works Committee in Mar 1909.

1. Nov 1882 - Jun 1883
2. Feb 1887 - Jun 1887
3. Sep 1887 - 27 Feb 1888
4. Mar 1888 - Jun 1888
5. Jun 1888 - Feb 1889
6. Mar 1889 - Aug 1889
7. Mar 1890 - Jul 1891
8. Jul 1891 - Nov 1891
9. Dec 1891 - 20 Sep 1892
10. 20 Sep 1892 - 23 Apr 1893
11. 25 Apr 1893 - 10 Oct 1893
12. 17 Oct 1893 - 6 Apr 1894
13. 20 Apr 1894 - Dec 1894
14. Jan 1895 - Nov 1895
15. Nov 1895 - 15 Oct 1897
16. 29 Oct 1897 - 12 Oct 1900

Greater Manchester County Record Office

17. 26 Oct 1900 - May 1903
18. Jun 1903 - 1 Dec 1905
19. 24 Dec 1905 - Nov 1908
20. Nov 1908 - Feb 1909

Works Committee

Mar 1909 - Dec 1911

B10/1/5/1-2 Works Committee

Two series. The first up to 1891. The second starts off where the Executive Committee finishes (see list of the latter).

B10/1/5/1/1-3 First Series

1. Mar 1887 - Oct 1888
2. Nov 1888 - Feb 1890
3. Feb 1890 - May 1891

B10/1/5/2/1-9 Second Series

1. Mar 1909 - Dec 1911
2. Jan 1912 - Oct 1914.
3. Oct 1914 - Jul 1918
4. Sep 1918 - Dec 1921
5. Dec 1921 - Dec 1924
6. Jan 1925 - Apr 1927
7. Apr 1927 - May 1930
8. Jun 1930 - Apr 1935
9. May 1935 - Apr 1940

B10/1/6/1-4 Traffic and Rates Committee

Active between 1891 and 1900. The powers of the Committee were suspended on 9 Feb 1900 under Section 13, Subsection~4 of the Ship Canal Act of 1893. See Minute of 9 Feb.

1. Dec 1891 - Apr 1893
2. May 1893 - Dec 1893
3. Jan 1894 - 14 Jun 1894
- 4.21 Jun 1894 - Feb 1900

NB The first two books entitled "Traffic Land and Parliamentary Committee."

Greater Manchester County Record Office

B10/1/7/1-5 Land and Estate Committee

The Committee was appointed by order of the Board dated 12 Jun 1893. Its purpose was to “*deal with all questions relating to the purchase and sale of lands*”. By resolution of the Board on the 25 Feb 1935 the Committee was re-appointed (see Minute 236 Board Minutes 20).

1. Jun 1893 - Mar 1895
2. Apr 1895 - Sep 1903
3. Feb 1904 - Nov 1913
4. Feb 1914 - Jul 1925
5. Nov 1925 - Jul 1934

B10/1/8/1-5 Labour Executive Committee

The Labour Executive Committee was appointed by resolution of the Board on 6 Oct 1916 (Minute 354 Board Minutes 14). Its brief was to “*deal with and report to the Board upon all questions relating to Labour both in the Ship Canal and Bridgewater Departments...*”. In March 1933 the Committee was re-named “The Police and Labour Executive Committee”. The Manchester Dock Police coming under its jurisdiction.

1. 20 Oct 1916 - 7 Mar 1919
2. 21 Mar 1919 - 3 Sep 1920
3. 17 Sep 1920 - 26 May 1922
4. 7 Jul 1922 - 18 Jul 1924
5. 12 Sep 1924 - 20 Jul 1936

A sixth minute book, up to Jul 1958, exists but has been retained by the Company.

Greater Manchester County Record Office

B10/1/9/1-16 Pilotage Committee

Formed in Oct 1895 the Committee consisted of the Manager, his assistant the Ship Canal superintendents and eight licensed ship canal Pilots. The functions of the Committee were solely concerned with the administration of a pilots service along the canal. This was wide ranging and the resolution of the 21 Oct 1895 should be consulted for further information. In Feb 1907 the Committee was dissolved by order of the Board (Minute 810). The Manchester Steamship Owners Association requested two places on the Committee. The Board agreed and the Committee was re-constituted from the following March. Five books, 1946-1963 have been retained by the company.

B10/1/9/1-16

1. Oct 1895 - May 1900
2. Aug 1900 - Jun 1903
3. Aug 1903 - 27 Sep 1905
4. 27 Sep 1905 - Jul 1907
5. Aug 1907 - Feb 1909
6. Mar 1909 - Dec 1910
7. Jan 1911 - Jul 1912
8. Sep 1912 - Jul 1914
9. Sep 1914 - 1 Aug 1917
10. 1 Aug 1917 - Feb 1921
11. Mar 1921 - Dec 1923
12. Jan 1924 - Dec 1926
13. Jan 1927 - Dec 1930
14. Jan 1931 - Oct 1935
15. Nov 1935 - Dec 1942
16. Jan 1943 - Dec 1945

B10/1/10/1-4

Attendance Books of the Pilotage Committee

1. 21 Oct 1895 - 4 Dec 1916
2. 8 Jan 1917 - 1 Dec 1930
3. 5 Jan 1931 - 20 Jul 1942
4. 21 Aug 1942 - 21 Apr 1955

Greater Manchester County Record Office

B10/1/11/1-4 Tolls, Rates and Charges Committee

Formed in Nov 1904, the Committee was constituted “*in pursuance of subsection 10 of Section 11 of the Manchester Ship Canal (Finance) Act of 1904 for the purpose of exercising the powers contained in Subsection 12 of Section 15 of the Manchester Ship Canal (Additional Capital) Act 1893*”.

One volume of Minutes dating from Dec 1937 to Oct 1958 has been retained by the Company.

1. Dec 1904 - 12 Mar 1915
2. 19 Mar 1915 - 1 Oct 1920
3. 29 Oct 1920 - 8 Apr 1927
4. 6 May 1927 - 13 Sep 1937

B10/1/12/1-21 Finance Committee

The Record Office has 3 volumes of this particular committee. It was in existence in 1887 and volumes 1-18 are not present. There are more volumes for meetings beyond 1943.

- 1 - 18 absent
19. May 1934 - 17 Dec 1936
20. 21 Dec 1936 - 18 Dec 1939
21. 28 Dec 1939 - 15 Nov 1943

NB Two separate Financial Committees are represented in these volumes. One, meeting on an ad-hoc basis, consisted of three members (quorum) of the full Committee convened every month.

B10/1/13/1-19 Stores Committee

As with the Finance Committee, many volumes are absent. Only one volume of this committee survives. It deals with the purchasing and administration of engineering equipment, paints and chemical required for maintenance. The Minutes go beyond 1943.

- 1-18 Absent
19. 17 Jul 1939 - 18 Jan 1943

B10/1/14/1-10 Bridgewater Committee

As with Stores and Finance, only one volume is extant. The Committee dealt with the Bridgewater Canal, which the Manchester Ship Canal purchased, with parliamentary approval in 1885. Minutes go beyond 1938

- 1 - 9 Absent
10. 1 Dec 1930 - 28 Apr 1938

Greater Manchester County Record Office

B10/1/15/1 Sub-Committee Minute Book

This volume is of minutes of sub-committees appointed to deal with specific issues affecting the Manchester Ship Canal Company. Examples are the Trafford Park Dock and Railway Bill 1904, Bridgewater Canals Bill 1905 and the importation of raw cotton to Manchester 1930

1. 5 Jan 1904 - 30 Apr 1934

B10/1/16/1-3 Agendas of General Meetings (Shareholders?)

- 1.
2. 16 Jun 1893 - 13 Feb 1908
3. 6 Aug 1908 - 22 Feb 1929

Greater Manchester County Record Office

B10/2/1-

Financial Records

/1/1-97	Journals
/1	Jan 1883 - Oct 1893
/2	Jun 1890 - Dec 1892
/3	Jan 1893 - Dec 1893
/4	Jan 1894 - Nov 1894
/5	Dec 1894 - Jun 1895
/6	Jun 1895 - Dec 1895
/7	Jan 1896 - Sep 1896
/8	Oct 1896 - Jun 1897
/9	Jun 1897 - Jan 1898
/10	Jan 1898 - Sep 1898
/11	Sep 1898 - Apr 1899
/12	Mar 1899 - Nov 1899
/13	Nov 1899 - Sep 1900
/14	Sep 1900 - Sep 1901
/15	Sep 1901 - Sep 1902
/16	Sep 1902 - Jul 1903
/17	Jul 1903 - Jun 1904
/18	Jun 1904 - Mar 1905
/19	Mar 1905 - Dec 1905
/20	Dec 1905 - Aug 1906
/21	Aug 1906 - May 1907
/22	May 1907 - Dec 1907
/23	Dec 1907 - Jul 1908
/24	Jul 1908 - Mar 1909
/25	Mar 1909 - Nov 1909
/26	Nov 1909 - Jun 1910
/27	Jun 1910 - Dec 1910
/28	Dec 1910 - Jul 1911
/29	Jul 1911 - Jan 1912
/30	Feb 1912 - Aug 1912
/31	Aug 1912 - Mar 1913
/32	Mar 1913 - Oct 1913
/33	Oct 1913 - Apr 1914
/34	May 1914 - Nov 1914
/35	Nov 1914 - Jun 1915
/36	Jul 1915 - Dec 1915

Greater Manchester County Record Office

/37	Jan	1916 - Jun	1916
/38	Jul	1916 - Dec	1916
/39	Jan	1917 - Jun	1917
/40	Jul	1917 - Dec	1917
/41	Jan	1918 - Jun	1918
/42	Jul	1918 - Dec	1918
/43	Jan	1919 - Jun	1919
/44	Jul	1919 - Dec	1919
/45	Jan	1920 - Jul	1920
/46	Aug	1920 - Dec	1920
/47	Jan	1921 - Jun	1921
/48	Jul	1921 - Dec	1921
/49	Jan	1922 - Jun	1922
/50	Jul	1922 - Dec	1922
/51	Jan	1923 - Jun	1923
/52	Jul	1923 - Dec	1923
/53	Jan	1924 - Jun	1924
/54	Jul	1924 - Dec	1924
/55	Jan	1925 - Jun	1925
/56	Jul	1925 - Dec	1925
/57	Jan	1926 - Jun	1926
/58	Jul	1926 - Dec	1926
/59	Jan	1927 - Jun	1927
/60	Jul	1927 - Dec	1927
/61	Jan	1928 - Jun	1928
/62	Jul	1928 - Dec	1928
/63	Jan	1929 - Jun	1929
/64	Jul	1929 - Dec	1929
/65	Jan	1930 - Jun	1930
/66	Jul	1930 - Dec	1930
/67	Jan	1931 - Jun	1931
/68	Jul	1931 - Dec	1931
/69	Jan	1932 - Jun	1932
/70	Jul	1932 - Dec	1932
/71	Jan	1933 - Jun	1933
/72	Jul	1933 - Dec	1933
/73	Jan	1934 - Jun	1934
/75	Jan	1935 - Jun	1935

Greater Manchester County Record Office

/76	Jul	1935 - Dec	1935
/77	Jan	1936 - Jun	1936
/78	Jul	1936 - Dec	1936
/79	Jan	1937 - Jun	1937
/80	Jul	1937 - Dec	1937
/81	Jan	1938 - Jun	1938
/82	Jul	1938 - Dec	1938
/83	Jan	1939 - Jun	1939
/84	Jul	1939 - Dec	1939
/85	Jan	1940 - Jun	1940
/86	Jul	1940 - Dec	1940
/87	Jan	1941 - Jun	1941
/88	Jul	1941 - Dec	1941
/89	Jan	1942 - Jun	1942
/90	Jul	1942 - Dec	1942
/91	Jan	1943 - Jun	1943
/92	Jul	1943 - Dec	1943
/93	Jan	1944 - Jun	1944
/94	Jul	1944 - Dec	1944
/95	Jan	1945 - Jun	1945
/96	Jul	1945 - Dec	1945
/97	Jan	1946 - Jun	1946

NB Journal No 1 concerns Coupon Accounts and the Parliamentary Fund

Greater Manchester County Record Office

B10/2/2/1-36 Ledgers

B10/2/2/1/1-12 Works Department

- 1 Missing
- 2 Jan 1893 - Dec 1894
- 3 Feb 1895 - Jul 1899
- 4 Jul 1899 - Jan 1905
- 5 Jan 1905 - Dec 1909
- 6 Jan 1910 - Dec 1920
- 7 Jan 1921 - Dec 1925
- 8 Jan 1926 - Dec 1931
- 9 Jan 1932 - Dec 1941
- 10 Jan 1942 - Jan 1948
- 11 Jan 1948 - Jan 1955
- 12 Jan 1955 - Aug 1959

B10/2/2/2/1-11 Land and Estate (Revenue)

- 1 Jan 1894 - Dec 1897
- 2 Jan 1898 - Jun 1901
- 3 Jul 1901 - Jan 1904
- 4 Jan 1904 - Jul 1906
- 5 Jul 1906 - Jan 1913
- 6 Jan 1913 - Jan 1923
- 7 Jan 1923 - Dec 1931
- 8 Jan 1932 - Jan 1939
- 9 Jan 1939 - Dec 1946
- 10 Jan 1947 - Dec 1953

Greater Manchester County Record Office

11 Jan 1954 - Aug 1959

B10/2/2/3/1-20 General Charges (Revenue)

1 Jan 1894 - Jan 1898

2 Jan 1898 - Jan 1902

3 Jan 1902 - Jan 1905

4 Jan 1905 - Jul 1909

5 Jul 1909 - Jan 1913

6 Jan 1913 - Jan 1916

7 Jan 1916 - Jan 1919

8 Jan 1919 - Jan 1922

9 Jan 1922 - Jan 1925

10 Jan 1925 - Jan 1928

11 Jan 1928 - Jan 1931

12 Jan 1931 - Dec 1934

13 Jan 1935 - Jan 1939

14 Jan 1939 - Jan 1942

15 Jan 1942 - Jan 1945

16 Jan 1945 - Jan 1948

17 Jan 1948 - Jan 1951

18 Jan 1951 - Jan 1954

19 Jan 1954 - Jan 1957

20 Jan 1957 - Dec 1959

Greater Manchester County Record Office

B10/2/2/4/1-17

Rent Rates & Taxes

- 1 Dec 1894 - Jan 1898
- 2 Jan 1898 - Jan 1901
- 3 Jan 1901 - Jul 1903
- 4 Jul 1903 - Jul 1905
- 5 Jul 1905 - Jan 1908
- 6 Jan 1908 - Jul 1910
- 7 Jul 1910 - Jan 1913
- 8 Jan 1913 - Jan 1917
- 9 Jan 1917 - Jan 1921
- 10 Jan 1921 - Jan 1926
- 11 Jan 1926 - Jan 1931
- 12 Jan 1931 - Jan 1936
- 13 Jan 1936 - Jan 1940
- 14 Jan 1940 - Jan 1945
- 15 Jan 1945 - Jan 1950
- 16 Jan 1950 - Jan 1955
- 17 Jan 1950 - Aug 1959

B10/2/2/5/1-24

Maintenance

- 1 Jan 1896 - Jan 1898
- 2 Jan 1898 - Jan 1901
- 3 Jan 1901 - Jan 1903
- 4 Jan 1903 - Jan 1905
- 5 Jan 1905 - Jan 1908
- 6 Jan 1908 - Jan 1910

Greater Manchester County Record Office

7	Jan 1910 - Jan 1913
8	Jan 1913 - Jan 1916
9	Jan 1916 - Jan 1919
10	Jan 1919 - Jan 1922
11	Missing
12	Jan 1925 - Jan 1928
13	Jan 1928 - Jan 1931
14	Jan 1931 - Jan 1934
15	Jan 1934 - Jan 1937
16	Jan 1937 - Jan 1940
17	Jan 1940 - Jan 1943
18	Jan 1943 - Jan 1946
19	Jan 1946 - Jan 1949
20	Jan 1949 - Jan 1952
21	Jan 1952 - Jan 1955
21a	Jan 1955 - Dec 1959
22	Jan 1960 - Dec 1962
22a	Jan 1960 - Dec 1963
23	Jan 1962 - Dec 1966
24	Jan 1970 - Dec 1971

B10/2/2/6/1-8 Dredging

1	Jan 1910 - Jan 1916
2	Jan 1916 - Jan 1921
3	Jan 1921 - Jan 1927

Greater Manchester County Record Office

4	Jan 1927 - Dec 1932
5	Jan 1935 - Jan 1939
6	Jan 1939 - Jan 1945
7	Jan 1945 - Jan 1952
8	Jan 1952 - Dec 1959

B10/2/2/7/1-3 Dredging

1	Jan 1952 - Dec 1954
2	Jan 1955 - Dec 1957
3	Jan 1958 - Dec 1960

B10/2/2/8/1-8 Electric Lighting

1	Jan 1909 - Jan 1918
2	Jan 1918 - Jan 1926
3	Jan 1926 - Jan 1933
4	Jan 1933 - Jan 1939
5	Jan 1939 - Jan 1944
6	Jan 1944 - Jan 1949
7	Jan 1949 - Jan 1953
8	Jan 1953 - Jan 1956

From 1956 accounts were transferred to Traffic and General

B10/2/2/9/1-8 Ellesmere Port

1	Jan 1922 - Jan 1927
2	Jan 1927 - Jan 1933
3	Jan 1933 - Jan 1939
4	Jan 1939 - Jan 1944

Greater Manchester County Record Office

5 Jan 1944 - Jan 1948

6 Jan 1948 - Jan 1952

7 Jan 1952 - Jan 1956

8 Jan 1956 - Dec 1959

B10/2/2/10/1-13 Dock Office

11 Nov 1944 - Sep 1948

12 Oct 1948 - Jun 1954

13 Jun 1954 - Aug 1959

Account transferred to Balance sheet Ledger
BS Fo 1700

B10/2/2/11/1-5 Bridgewater Department

4 Jan 1945 - Aug 1952

5 Aug 1952 - Aug 1959

transferred to BS Fo 1800

B10/2/2/12/1-3 Bankers

1 Jan 1888 - Dec 1923

2 Jan 1924 - Jan 1947

3 Jan 1947 - Aug 1959

Transferred to BS Fo 01810

B10/2/2/13/1-4 T.A.W. (Thomas A. Walker)

1 Dec 1887 - May 1892

2 Jan 1888 - Feb 1892

3 Jan 1890 - Feb 1891

4 Jul 1890 - Feb 1892

Greater Manchester County Record Office

B10/2/2/14/1-23	Traffic Revenue
1	Jul 1891 - Dec 1913 *
2	Jan 1894 - Jun 1895
3	Jul 1895 - Jun 1897
4	Jul 1897 - Jul 1899
5	Jul 1899 - Jun 1900
6	Jul 1901 - Jan 1903
7	Jan 1903 - Jan 1905
8	Jan 1905 - Jan 1909
9	Jan 1909 - Jan 1913
10	Jan 1913 - Jan 1916
11	Jan 1916 - Dec 1919
12	Jan 1920 - Jan 1923
13	Jan 1923 - Jan 1926
14	Jan 1926 - Jan 1928
15	Jan 1928 - Jan 1932
16	Jan 1932 - Jan 1936
17	Jan 1936 - Jan 1939
18	Jan 1939 - Jan 1942
19	Jan 1942 - Jan 1945
20	Jan 1945 - Jan 1948
21	Jan 1948 - Jan 1951
22	Jan 1951 - Jan 1955
23	Jan 1955 - Dec 1958

* One account i.e. Traffic Plant (Capital) is retained in this volume all others are transferred elsewhere.

Greater Manchester County Record Office

B10/2/2/15/1-16

Stores

- 1 Jan 1894 - Dec 1894
- 2 Jan 1895 - Jan 1896
- 3 Jan 1896 - Jan 1902
- 4 Jan 1903 - Jul 1907
- 5 Jul 1907 - Jul 1911
- 6 Jul 1911 - Jan 1915
- 7 Jan 1915 - Jan 1920
- 8 Jan 1920 - Jan 1924
- 9 Jan 1924 - Dec 1927
- 10 Jan 1928 - Jan 1932
- 11 Jan 1932 - Jan 1937
- 12 Jan 1937 - Jan 1941
- 13 Jan 1942 - Dec 1946
- 14 Jan 1947 - Dec 1951
- 15 Jan 1952 - Dec 1957
- 16 Dec 1957 - Jan 1959

Account transferred to Sheet Ledger BS 0410

B10/2/2/16/1-14

Working of Locks

- 1 Jan 1896 - Jul 1899
- 2 Jul 1899 - Jan 1903
- 3 Jan 1903 - Jan 1906
- 4 Jan 1906 - Jan 1909
- 5 Jan 1909 - Jan 1913
- 6 Jan 1913 - Dec 1915

Greater Manchester County Record Office

7	Jan 1916 - Jan 1920
8	Jan 1920 - Dec 1923
9	Jan 1924 - Jan 1929
10	Jan 1929 - Jan 1925
11	Jan 1935 - Jan 1941
12	Jan 1941 - Jan 1947
13	Jan 1947 - Jan 1953
14	Jan 1947 - Jul 1959

Account transferred to Harbour and navigational Control Ledger [no number] entry also in journal J23 Fo 184B note that the latter Journals are not in our possession.

B10/2/2/17/1-2 Parliamentary Fund

1	1882 - 1883
2	1885 - 1886

B10/2/2/18/1-5 Law and Parliamentary Revenue

1	Feb 1874 - Jan 1907
2	Jan 1907 - Jan 1919
3	Jan 1919 - Jan 1931
4	Jan 1931 - Jan 1949
5	Jan 1949 - Aug 1959

Account transferred to Misc.: Receipts and Expenditure Ledger Misc.: Fo A1.

B10/2/2/19/2 Law and Parliamentary Charges

1	Sep 1887 - May 1946
---	---------------------

Greater Manchester County Record Office

B10/2/2/20/1-6

Income Tax

- 1 Sep 1903 - Jan 1923
- 2 Jan 1923 - Jan 1934
- 3 Jan 1934 - Jan 1942
- 4 Jan 1942 - Jan 1949
- 5 Jan 1949 - Jan 1956
- 6 Jan 1956 - Aug 1959

A/C transferred to Bs Folio 0931

B10/2/2/21/1-5

Engineering and Surveying

- 1 Aug 1887 - Jul 1907
- 2 Jul 1907 - Jan 1932
- 3 Jan 1932 - Jan 1946
- 4 Jan 1946 - Jan 1954
- 5 J an 1954 - Jan 1959

A/C transferred to Maintenance Ledger 22
to Y1

B10/2/2/22/1-2

National Insurance

- 1 Jul 1912 - Jan 1935
- 2 Jan 1935 - Aug 1959

Balance transferred to balance sheet ledger BS
Fo 0251

Greater Manchester County Record Office

B10/2/2/23/1-23	Personal
	1-19 Missing
	20 Jan 1946 - Jan 1949
	21 Jan 1949 - Jan 1952
	22 Jan 1952 - Jan 1955
	23 Jan 1955 - Dec 1958
B10/2/2/24/1	Purchase of Land and Compensation
1	Mar 1912 - Dec 1931
B10/2/2/25/1-16	Tugs and Launches
1	Jan 1896 - Jul 1899
2	Jul 1899 - Jan 1903
3	Jan 1903 - Jan 1906
4	Jan 1906 - Jan 1909
5	Jan 1909 - Jan 1914
6	Jan 1914 - Jan 1918
7	Jan 1918 - Jan 1922
8	Jan 1922 - Jan 1926
9	Jan 1926 - Jan 1930
10	Jan 1930 - Jan 1934
11	Jan 1934 - Jan 1939
12	Jan 1939 - Jan 1943
13	Jan 1943 - Jan 1947
14	Jan 1947 - Jan 1951
15	Jan 1951 - Jan 1955

Greater Manchester County Record Office

16 Jan 1955 - Dec 1958

B10/2/2/26/1-2 War Measures

1 Jun 1937 - Jan 1944

2 Jan 1944 - Mar 1958

B10/2/2/27/1 Second Parliamentary Fund

1 Mar 1884 - Dec 1885

B10/2/2/28/1-3 Pilots Earnings and Fund Ledger

1 Jan 1929 - Jan 1942

2 Jan 1942 - Jan 1951

3 Jan 1951 - Aug 1959

Accounts transferred to BS Ledger

B10/2/2/29/1-3 Capital Account

2 May 1889 - Jan 1930

3 Jan 1930 - Oct 1951

Transferred to capital ledger No 5

B10/2/2/30/1 Debit Ledger

1 Aug 1885 - May 1887

B10/2/2/31/1 General Ledger

1 1885 - 1889

B10/2/2/32/1 Suspense Account

1 1885 - 1887 H-M

Greater Manchester County Record Office

B10/2/2/33/1-2 General Charges (Capital)

2 Jan 1925 - Aug 1959

Account transferred to BS ledger

B10/2/2/34/1-3 Superannuation Fund

1 Feb 1927 - Jan 1949

2 Jan 1949 - Jan 1957

3 Dec 1926 - Dec 1957

Account transferred to superannuation and pensions ledger No 1

This volume covers years that are recorded in B10/2/2/34/1-2. It is mostly concerned with investments rather than contributions found in the previous two volumes

B10/2/2/35/1 General Charges

1 Aug 1887 - Jul 1903

This volume seems to cover accounts that can be found in other ledgers after 1903. For instance in Jul 1903 the income tax account was transferred to the series of ledgers listed under ref B10/2/2/20/1-6

B10/2/2/36/1-2 Ship Canal House

These ledgers are recorded with the expenses incurred in maintaining the H.Q. of the company repairs, energy, supplies and wages to staff are recorded.

2 Jan 1945 - Jun 1958

Greater Manchester County Record Office

B10/2/3/1-12 Cash Books

The cash books provided a daily account of monies received and distributed by the company. They are the first record of any financial transaction. The cash books are divided into 12 groups

B10/2/3/1/1-2 Parliamentary Fund

These volumes record the money raised to pay for expenses incurred in drafting legislation and lobbying parliament. The names of shareholders are recorded as well as amounts raised and how it was spent. B10/2/3/1/2 accounts for the second fund set up when the first attempt fell

1 Aug 1884 - Apr 1885

2 Sep 1883 - Dec 1885

B10/2/3/2/1-7 Capital Cash Books

Record the monies received from company shareholders consequent to calls. Debts against shareholders are also recorded. Although there are eight volumes the last one was never used. Furthermore the second volume is continued in the fourth; the first in the third

1 Jul 1882 - Sep 1883

2 Mar 1885 - Jul 1888

3 Jul 1883 - Apr 1886

4 Jul 1885 - Feb 1890

6 Mar 1890 - May 1926

7 Jun 1926 - Jun 1959

B10/2/3/3/1 Interest Cash Book

Payments to shareholders. Cross referenced to suspense account ledgers

1 Aug 1886 - Dec 1888

Greater Manchester County Record Office

B10/2/3/4/4-8 Debenture Interest & Dividends

4 Jan 1926 - Dec 1932

5 Jan 1933 - Dec 1940

6 Oct 1940 - Mar 1950

7 Jun 1950 - Sep 1959

8 Nov 1959 - Dec 1971

B10/2/3/5/1-7 Expenditure Cash Books

3 Jan 1889 - Mar 1890

5 Apr 1890 - Aug 1891

7 Aug 1891 - Feb 1892

B10/2/3/6/1 T.A.W

TAW stands for Thomas A. Walker, the main contractor, this volume details wages paid for making bricks, carpentry, masons excavation work. No names are recorded

1 Jun 1890 - Dec 1892

B10/2/3/7/1-39 Rental Cash Books

1 - 34 missing

35 Feb 1950 - Aug 1951

36 Sep 1951 - Jan 1953

37 Feb 1953 - Jun 1954

38 Jul 1954 - Dec 1955

39 Jan 1956 - Dec 1957

Greater Manchester County Record Office

B10/2/3/8/1-93 Wages Cash Books

1-88 missing

89 Jul 1949 - Jan 1950

90 Jan - Jul 1950

91 Jul 1950 - Jan 1951

92 Jan - Jul 1951

93 Jul - Dec 1951

B10/2/3/9/8-10 National Insurance

8 Dec 1938 - Nov 1942

10 Jul 1947 - Jun 1954

B10/2/3/10/1-4 Weekly Expenses Account

1 Jul 1929 - May 1933

2 May 1933 - Aug 1936

3 Aug 1936 - Oct 1940

4 Oct 1940 - Sep 1944

B10/2/3/11/1-44 Sundry Receipts Cash Books

1-37 missing

38 Jan 1950 - Jan 1951

39 Jan 1951 - Mar 1952

40 Apr 1952 - May 1933

41 May 1953 - Jun 1954

42 Jul 1954 - Jul 1955

43 Aug 1955 - Oct 1955

44 Oct 1956 - May 1937

Greater Manchester County Record Office

B10/2/3/12/1-2 Sundry Expenses

1 Nov 1924 - Oct 1934

2 Oct 1934 - Feb 1954

B10/2/4/1-12 Expenditure Analysis 1888-1959

A series of volumes providing a monthly record of costs in sections of the company. Each volume includes wages, allowances, expenses and overheads and professional fees.

B10/2/4/1/1-23 General Charges (Revenue)

1-20 missing

21 Apr 1950 - Aug 1953

22 Sep 1953 - Dec 1956

23 Jan 1957 - Dec 1959

B10/2/4/2/1-14 Tugs, Rail Labour, Working and Locks

1-10 missing

11 Jun 1950 - Oct 1952

12 Nov 1952 - Jan 1955

13 Feb 1955 - Dec 1956

14 Jan 1957 - Dec 1959

B10/2/4/3/1-4 Law and Parliamentary Charges

1-2 missing

3 May 1947 - Dec 1948

4 Jan 1949 - Dec 1959

Greater Manchester County Record Office

B10/2/4/4/1-10 Law and Parliamentary Revenue

1-8 missing

9 Dec 1943 - Sep 1951

10 Oct 1951 - Dec 1959

B10/2/4/5/1 Traffic

1 Jul 1891 - Dec 1901

B10/2/4/6/1-32 Works

1-26 missing

27 Feb 1950 - Apr 1951

28 May 1951 - Aug 1952

29 Sep 1952 - Dec 1953

30 Dec 1953 - Aug 1955

31 Sep 1955 - Sep 1957

32 Oct 1957 - Dec 1959

B10/2/4/7/1-17 Engineering and Surveying

1-12 missing

13 Jul 1947 - Jan 1950

14 Feb 1950 - Jul 1952

15 Aug 1952 - Dec 1954

16 Jan 1955 - Aug 1957

17 Sep 1957 - Dec 1959

Greater Manchester County Record Office

B10/2/4/8/1-16 Dredging

1-14 missing

15 Jan 1949 - Dec 1951

16 Jan 1952 - Nov 1955 *

* continued in volume B10/2/4/10/1

B10/2/4/9/1-22 Maintenance

1-19 missing

20 Aug 1949 - Sep 1951

21 Oct 1951 - Dec 1953

22 Dec 1953 - Nov 1955

B10/2/4/10/1 Maintenance and Dredging

1 Dec 1955 - Dec 1959

B10/2/4/11/1-22 Land & Estate Revenue

1-19 missing

20 Dec 1948 - May 1952

21 Jun 1952 - Dec 1955

22 Jan 1956 - Mar 1959

B10/2/4/12/1-3 General Charges Capital

1 Jan 1888 - Aug 1924

2 Sep 1924 - Feb 1932

3 Mar 1932 - Dec 1959

N.B. B10/2/4/12/1 contains analysis for
Law and Parliamentary Charges for
Jan 1888-Dec 1895

Greater Manchester County Record Office

B10/4/1 SHAREHOLDERS RECORDS

B10/4/1/1-58 Shareholders Address Books

- 1 Corrected up to 1 Dec 1908
- 2 Corrected up to 1 Dec 1914
- 3 Corrected up to 1 Dec 1920
- 4 Corrected up to 1 Dec 1921
- 5 Corrected up to 1 Dec 1922
- 6 Corrected up to 1 Dec 1923
- 7 Corrected up to 1 Dec 1924
- 8 Corrected up to 1 Dec 1925
- 9 Corrected up to 1 Dec 1926
- 10 Corrected up to 1 Dec 1927
- 11 Corrected up to 1 Dec 1928
- 12 Corrected up to 1 Dec 1929
- 13 Corrected up to 1 Dec 1930
- 14 Corrected up to 1 Dec 1932
- 15 Corrected up to 1 Dec 1934
- 16 Corrected up to 1 Dec 1934 A-L
- 17 Corrected up to 1 Dec 1934 M-Z
- 18 Corrected up to 1 Dec 1935 A-L
- 19 Corrected up to 1 Dec 1935 M-Z
- 20 Corrected up to 1 Dec 1936 A-L

Greater Manchester County Record Office

- 21 Corrected up to 1 Dec 1936 M-Z
- 22 Corrected up to 1 Dec 1937 A-L
- 23 Corrected up to 1 Dec 1937 M-Z
- 24 Corrected up to 1 Dec 1938 A-L
- 25 Corrected up to 1 Dec 1938 L-Z
- 26 Corrected up to 1 Dec 1939 A-L
- 27 Corrected up to 1 Dec 1939 M-Z
- 28 Corrected up to 1 Dec 1940 A-L
- 29 Corrected up to 1 Dec 1940 M-Z
- 30 Corrected up to 1 Dec 1941 A-L
- 31 Corrected up to 1 Dec 1941 M-Z
- 32 Corrected up to 1 Dec 1942 A-L
- 33 Corrected up to 1 Dec 1942 M-Z
- 34 Corrected up to 1 Dec 1943 A-L
- 35 Corrected up to 1 Dec 1943 M-Z
- 36 Corrected up to 1 Dec 1944
- 37 Corrected up to 1 Dec 1945
- 38 Corrected up to 1 Dec 1946
- 39 Corrected up to 1 Dec 1947
- 40 Corrected up to 1 Dec 1948
- 41 Corrected up to 1 Dec 1949
- 42 Corrected up to 1 Dec 1950
- 43 Corrected up to 1 Dec 1951

Greater Manchester County Record Office

44 Corrected up to 1 Dec 1952

45 Corrected up to 1 Dec 1953

46 Corrected up to 1 Dec 1954

47 Corrected up to 1 Dec 1955

48 Corrected up to 1 Dec 1956

49 Corrected up to 1 Dec 1957

50 Corrected up to 1 Dec 1958

51 Corrected up to 1 Dec 1959

52 Corrected up to 1 Dec 1960

53 Corrected up to 1 Dec 1961

54 Corrected up to 1 Dec 1962

55 Corrected up to 1 Dec 1963

Greater Manchester County Record Office

B 10/4/2/1-31 Registers of Transfers of Ordinary Shares

1-11	missing		
12	Jan 1919	-	Dec 1920
13	Jan 1921	-	Dec 1922
14	Jan 1923	-	Dec 1924
15	Jan 1925	-	Dec 1925
16	Jan 1926	-	Dec 1926
17	Jan 1927	-	Dec 1928
18	Jan 1929	-	Dec 1931
19	Jan 1932	-	Dec 1934
20	Jan 1935	-	Dec 1937
21	Jan 1938	-	Dec 1941
22	Jan 1942	-	Dec 1943
23			
24	Jan 1945	-	Dec 1947
25	Jan 1948	-	Dec 1950
26	Jan 1951	-	Dec 1952
27	Jan 1953	-	Dec 1954
28	Jan 1955	-	Dec 1956
29	Jan 1957	-	Dec 1958
30	Jan 1959	-	Dec 1959
31	Jan 1961	-	Dec 1962